

Key to the Maps

① Waypoint: Landmarks during the stage

Pathways:

- GR249 Stage or Alternative Route on the map
- GR249 etapa 27 GR249, stage 27 – Other GR249 stage
- GR141 GR141 – Another Long-distance route (GR)
- PR-A 243 PR-A 243 – Short-distance route (PR)
- SL-A 175 SL-A 175 – Local route (SL)
- GR249 overlapping with another GR
- GR249 overlapping with a PR
- GR249 overlapping with an SL
- GR249 overlapping with another GR & a PR
- Another stage overlaps with another GR
- Another stage overlaps with a PR
- Another GR overlaps with a PR
- Another stage overlaps with another GR & a PR
- Another stage overlaps with an SL
- A PR and SL overlap

▲ 770 m Summit

⛶ Caves

🚉 Train Station

🚌 Bus Stop

Transport Network:

- A-357 Main Road
- A-92 Dual carriageway or Motorway
- Track or lane
- Railway line

Water features

- Smaller watercourse
- Río Genal River (Larger volume)
- Reservoir or lake

Coastal features

- Shallow water
- Deep water
- T.m. Málaga Municipal boundary
- Provincial boundary
- Parque... Protected natural space
- Buildings – Settlements – Constructions
- 300 Contour lines (equivalent to 100m)
- Contour lines (equivalent to 20m)

Land use:

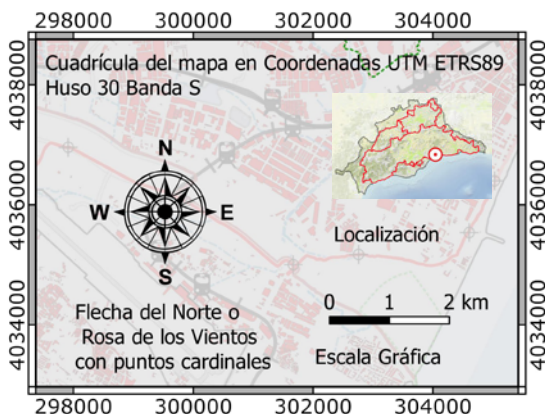
- Land used for livestock grazing, arable farming or unpopulated land
- Flood plains, watercourses or a body of water
- Areas of woodland or thicket

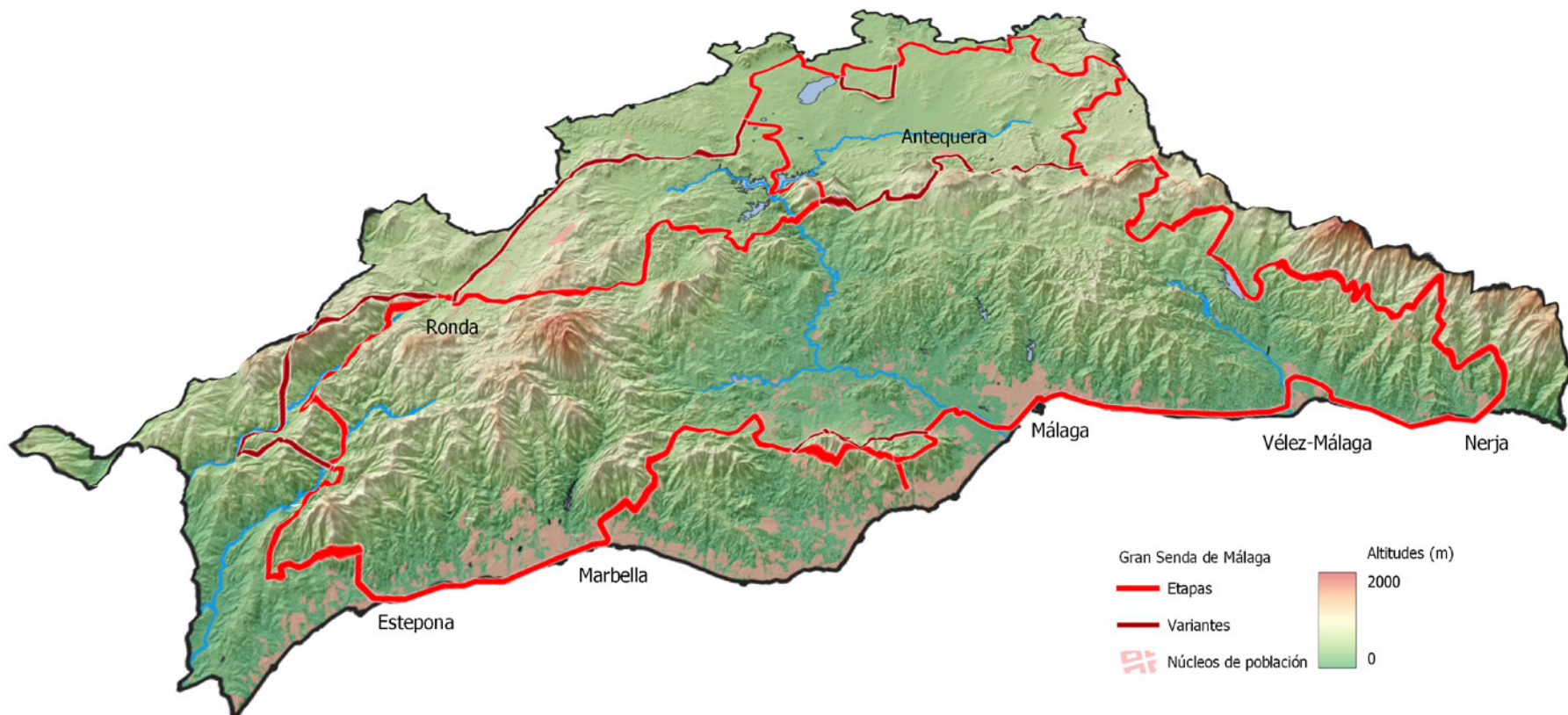
Key to the maps for each stage:

Not applicable to the overview map whose representation and scale are different.

Elements found on the map::

The map's orientation is always to the north, has a grid in UTM ETRS89 coordinates, graphic scale and a location image to position it within the province.





About the Maps

Each stage has a map showing its route, the places it passes through and other geographical information. It would be difficult to display everything, because a semi-detailed scale is used (approximately 1:50,000), but you can find what we consider the most representative.

The map allows the hiker to navigate, to plan, to follow the path and to discover the different sites that line the route. Roads, railways and

train stations, paths, tracks, towns, bus stops, rivers, streams, protected natural spaces, names of mountain ranges, summits, contour lines, land use and other sites of historical interest are indicated. It should also be noted that all of the certified trails that cross, overlap or are close to the stage (with their respective code) are also included.

The route in these cases will have two or more colours on the map.

