



Stage 4 TORROX • NERJA

THE STAGE IN SUMMARY

Stage 4 runs between the two easternmost municipalities on the Province's coast, Torrox Costa & Nerja. Both are located close to important rivers originating in the mountains of Sierra Almijara. Firstly, the Torrox which vaguely follows a line from Cerro Lucero (Stage 6) and the Chillar, which is crossed again on Stage 5, has its source on the eastern slopes of Navachica. The change of municipality takes place at a small stream known as Los Frontiles.

The general direction is east, following the coastline and thus running parallel with the N-340 motorway. During the initial and final sections, you walk on the beach or along the rocky coastline. There is one longer section alongside the motorway, and separated from the coast by the odd house or field, which at times only leaves a narrow passage to walk along. With the addition of the pathways along the clifftops in the middle section of the stage, the assortment of trail types used throughout, is completed.

The lower courses of both rivers are really the only transitable routes to travel inland from La Axarquía coast, owing to the surrounding peaks formed of slate. These would normally not be as imposing however, in the Stage's middle section they drop directly into the sea from 150 metres, with a small platform cut into the rock for the motorway, just 25 metres above the sea. It is difficult not to be impressed by the fact that, even in such a hostile environment, traces of the vineyards that disappeared at the end of the 19th century, can still be seen in the dry-stone walls. The same mountain sides and equally unexpected places, are now sprinkled with the dwellings of residential developments and tourist amenities.

Coastal scenery of cliff, with agricultural walls and the beaches next to the pathway



4. TORROX • NERJA

Torrox Lighthouse – Torrox Costa (W) (10m)



Chíllar river, Nerja (W) (5m)



7.3 km



2 h 10 min.



35 m



40 m



Linear



On foot
Bike



2.4 km



4.9 km



0 km



Environment
hazards



1

2

3

4

5

Navigation



1

2

3

4

5

Underfoot
Conditions



1

2

3

4

5

Physical Effort



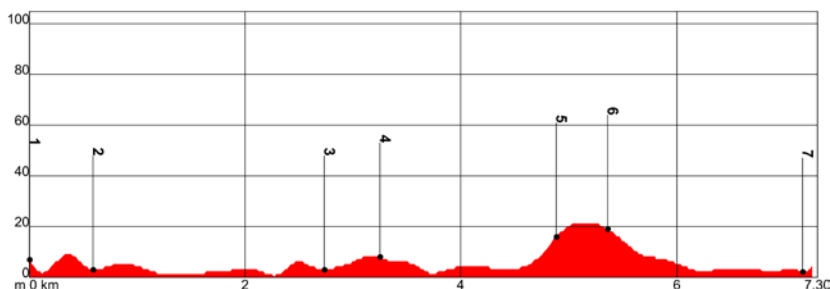
1

2

3

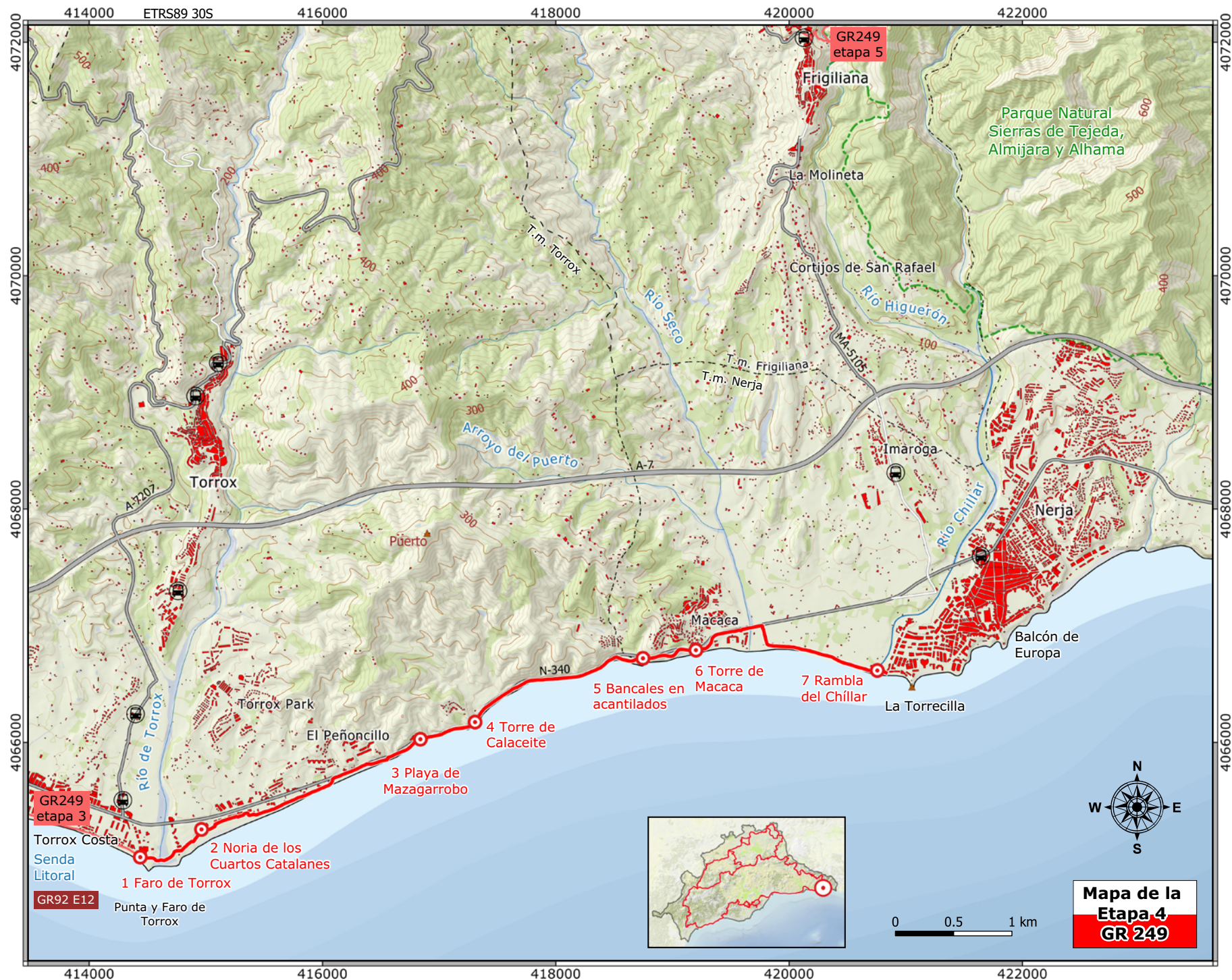
4

5



- Transit along the roadside on some occasions
- Road traffic circulating around the beaches of Peñoncillo & Playazo
- Wading through the Arroyo Chíllar waterway

P O I N T	X	Y	HEIGHT ABOVE SL	DISTANCE
1 Torrox Lighthouse	414437	/ 4065017	/ 9 m	Km 0,0
2 Waterwheel of the Cuartos Catalanes	414962	/ 4065255	/ 9 m	Km 0,5
3 Mazagarrobo beach	416839	/ 4066028	/ 9 m	Km 2,7
4 Calaceite Tower	417308	/ 4066174	/ 15 m	Km 3,3
5 Terraced cliffs	418747	/ 4066721	/ 7 m	Km 4,9
6 Macaca Tower	419201	/ 4066791	/ 25 m	Km 5,4
7 Chíllar dry river bed	420756	/ 4066617	/ 5 m	Km 7,3



ROUTE DESCRIPTION

Torrox Point and Peñoncillo

→ Up to km 3.5

Stage 4 sets off from the emblematic surroundings of the Roman ruins and lighthouse at Torrox, the furthest west of the six in the Province of Málaga. Although it is normally possible to cross the riverbed of the River Torrox directly from the lighthouse pathway, the recommended option is to cross the bridge of the N-340 main road. This is due to the route looping around to the north, passing through gardens and car parks next to the riverbanks, themselves filled with reeds and odd poplar trees.

Once on the other side of the river, you continue a few hundred metres along the cliffs of conglomerate rock, until you find some steps leading down to Peñoncillo beach. A short distance on, on a raised section to your left, there are archaeological remains (km 1.5) with tall buildings just behind. The site around the ancient water-wheel for a well of the Cuartos Catalanes is surprisingly deep, supported by red brick arches and stonework walls.

The rivermouth of the Torrox in summer with the lighthouse in the distance



Returning to the sand, which is fairly firm underfoot, the attractive seafront walkway is not far from the shore but short in length, some 500 metres in total. You then follow a curve inland until you reach the motorway, precisely at the kilometre 285 marker, just next to a sizeable boathouse.

Despite the beach not being very built-up, there are some obstacles that could make walking along the beach difficult. That said, access to the beach from the Great Path is easy and hence frequently done. The route then gains elevation right away, drawing our attention to the cuts into the schist on the far side of the motorway and the first breakwaters formed of enormous boulders between the Great Path and the beach. Soon you reach a pointed boulder on your right-hand side, with some white stairways down to the small beaches and a small, decorated altar in the car park.

The area of sea cliffs

→ Up to km 7

A remodeled bend in the road makes it easier to continue along Avenida de Calaceite, soon to arrive at the unusual landscape of the cove of Mazagarrobo (km 3.5). Its grey sand is bordered by craggy cliffs, at the bottom of where we can still find antiquated dry-stone walls. The small sea cliff provides refuge for some autochthonous plants adapted to the sea spray to the right, meanwhile on top of a slightly higher headland is the Calaceite beacon. This displays similar workmanship to other medieval defensive constructions along the coastline. A large sea ▶



The Balcón de Europa with the Cliffs of Maro and Sierra Almijara in the distance

wall made with limestone blocks sits at the base of the cut made for the road, to prevent any collapse. This provides access by road to the neighbouring residential areas.

Striking mountains tower up on the far side of the N-340, where sparse scrubland is broken up by hundreds of metres of retaining walls made with the same slaty stone. This can be appreciated even more in the immediacy of Vilches beach, at kilometre 5.5. You briefly set foot on the beach, but soon move onto a limited section of the disused main road to begin the ascent, which leads to the highest point on the Stage. This is marked by Macaca Tower at kilometre 6.2, with impressive sea cliffs below, which the path runs close to on several occasions. Entering the built-up area signals your proximity to Nerja, seen to the east and from here you gradually make your way down to sea level.

The beaches and clifftops of Nerja

→ To the end of the stage

Continuing on around the edge of high-rise buildings with garden areas, until you

pass over the difficult-to-spot Arroyo Seco waterway, where you make a sharp turn across a clearing. This takes you Playazo beach, which stretches to almost 2 kilometres long. The scenery here is undoubtedly rather less typical, where a compacted sand track allows cars to access the numerous & ageless agricultural plots. These are elongated in shape and perpendicular to the beach, from where they can be accessed. Many of these plots now tend to be less for horticultural use, instead being fenced off patches with knocked-together huts used to enjoy the beachside location.

There is also an area for motorized watersports and a fishing boat beach mooring. Just further on, you come across the dried river bed of the River Chillar, where Stage 4 ends however you can continue along the city's seafront boulevard. Carrying on along the pavement, you reach the ruins that the beach takes its name from, La Torrecilla, built with a combination of masonry and brickwork, it is likely to have originated in the 18th century. ■